

Music development plan summary: *Chellaston Academy*

Below is an overview that outlines some of the key information regarding music at Chellaston Academy.

Overview

Detail	Information
Academic year that this summary covers	2024-2025
Date this summary was published	July 2024
Date this summary will be reviewed	July 2025
Name of the school music lead	J. Sutton
Name of school leadership team member with responsibility for music (if different)	K. Skinner
Name of local music hub	Derby & Derbyshire Music Partnership
Name of other music education organisation(s) (if partnership in place)	QEGSMAT QEGS & CODA

This is a summary of how our school delivers music education to all our pupils across three areas – curriculum music, co-curricular provision and musical experiences – and what changes we are planning in future years. This information is to help pupils and parents or carers understand what our school offers and who we work with to support our pupils' music education.

Part A: Curriculum music

This is about what we teach in lesson time, how much time is spent teaching music and any music qualifications or awards that pupils can achieve.

At Chellaston Academy the music curriculum incorporates elements from the [Model Music Curriculum](#). Students will develop their performance skills, while exploring a range of different instruments, including voice. They will develop their composition and improvisation skills on both instruments and using music technology software. Throughout all aspects of the curriculum students will also develop their aural knowledge, learning to analyse music from all styles of music and how to discuss this through their understanding of music elements.

As outlined on the academy website [Music - Chellaston Academy](#), at KS3 students receive 2 hours of music lessons over a two-week timetable.

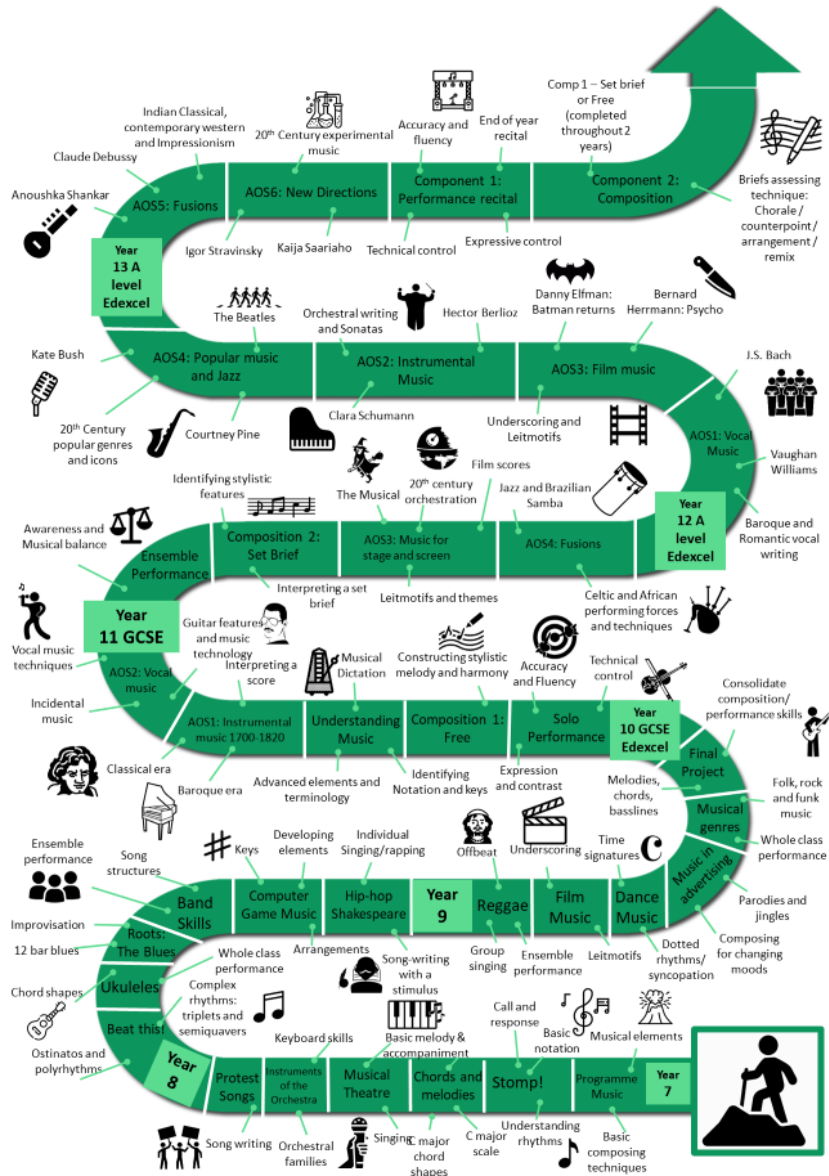
Music is an option at KS4, with students who opt the subject studying Edexcel GCSE Music. At KS4 students receive 6 hours a fortnight of music lessons. This course continues to develop students' performance, composition and appraisal skills, resulting in two performances, two compositions and a final listening exam, for which they study 8 set pieces of music across 5 areas of study. They will also develop their theory, dictation and unfamiliar listening skills throughout the process.

Music is an option at KS5, with students who opt the subject studying Edexcel GCE Music. At KS5 students receive 10 hours a fortnight of music lessons. The A Level course builds on from the GCSE equivalent, allowing students to further develop their performance, composition and appraisal skills.

The Seven Year curriculum: Music



Across all key stages students will develop their performance, composition and listening and appraising skills. Students will have opportunities to explore different instruments, including keyboard, guitar, ukulele, percussion and singing. In addition to developing their instrumental skills students will also have an opportunity to create music through use of music technology.



Part B: Co-curricular music

This is about opportunities for pupils to sing and play music, outside of lesson time, including choirs, ensembles and bands, and how pupils can make progress in music beyond the core curriculum.

Chellaston Academy provides students with a range of instrumental and vocal groups and clubs.

- **Peripatetic instrument lessons**

We have visiting teachers for the following instruments:

- Piano
- Drums
- Bass Guitar
- Guitar
- Woodwind (Saxophone, Clarinet, Flute)
- Brass (Trumpet)
- Vocals

Lessons are provided privately with the teachers and charged accordingly, directly to the parents/carers. The Academy offers subsidised lessons to students entitled to Pupil Premium, as well as those studying GCSE Music.

- **Ms Haywood Choirs**

Ms Haywood runs choirs for Year 7, 8 and 9 students every Friday. These are free to attend for any students from KS3.

- **Show Choir**

Show Choir rehearses every Wednesday lunch time, open to anyone. Exploring songs from musicals, developing ensemble singing skills, as well as adding appropriate movement to accompany the performance.

- **Chellaston Band**

Chellaston Band rehearse every Wednesday after school, open to anyone who plays an instrument. We rehearse pieces from all styles, again developing ensemble performance skills, as well as social and communication skills.

- **Staff Wellbeing Choir**

The Choir rehearses every Friday after school. A chance for staff to have some fun, be social with colleagues, as well as feel the benefit of singing.

- **Assembly entrance performers**

We have a regular rota of piano players who will perform as students are entering the hall for assembly each morning.

Part C: Musical experiences

This is about all the other musical events and opportunities that we organise, such as singing in assembly, concerts and shows, and trips to professional concerts.

Throughout the academic year we provide many different musical opportunities for students to take part in and/or attend.

- **Christmas Concert**

The Christmas concert provides opportunities for our musical ensembles to showcase their talents, as well as for individual soloists and groups. It is an opportunity for students to gain confidence performing whilst celebrating their achievements in a supportive environment. We also invite students from our feeder primary schools to watch the concert.

- **Production**

In collaboration with the Drama department we run a school production/musical. This allows us to showcase our strong singers, as well as instrumentalists who may play in the band as part of the production.

- **Easter Showcase/Recital**

At Easter we showcase our GCSE and A Level Music students who will be finalising their performance and composition coursework. This is an intimate recital, providing an opportunity for parents/carers to experience the music their children have been working on throughout their courses.

- **Summer Concert/Primaries Tour**

At the end of the year, we like to further showcase the students who regularly attend our extra-curricular clubs and soloists, by hosting a summer concert and/or doing a tour of our local primary schools.

- **Transition Day Performances**

While the Year 6s take part in their transition days we have students perform to the students as they enter each day for their morning assembly. This helps develop our performers' confidence in performing, as well as showcasing the opportunities the Year 6s will have when they join the Academy in Year 7. Our students will also perform to parents during the evening talks to Year 6 parents.

- **ICE Festival/Rewards Day Performances**

Each term we have a Rewards Day or ICE Festival, during which we have a rota of performances from all of our ensembles, as well as performances from soloists/duets etc.

- **Performances within assemblies**

We have a regular rota of piano players who will perform as students are entering the hall for assembly each morning.

- **Spirit of Chellaston**

The Spirit of Chellaston event is an event organised and hosted within the local community. Each year, we have performers from the Academy take part in the

day. Continuing to develop the links with the community and showcase the students we have at the Academy.

In the future

This is about what the school is planning for subsequent years.

Use this space to include any information on any improvements you plan to make for subsequent years in curriculum music, co-curricular music or musical experiences, including when you plan to introduce changes.

Also consider including:

Moving forward, we have lots of plans for further development of Music within Chellaston Academy, both within the curriculum, as well as musical opportunities.

Some of our ideas for the future are listed below:

- Development of music tech. provision across all key stages.
- New extra-curricular groups – Music tech. club, Ukulele choir, Wind band, music theory group
- Instrument lessons provided by external peripatetic teachers who may also provide occasional workshops to classes.
- Whole class/workshop opportunities provided by Derby & Derbyshire Music Partnership.
- More performances within the local community – care homes/hospital Christmas Carols etc.
- Trips to shows/concerts
- Fund raising events